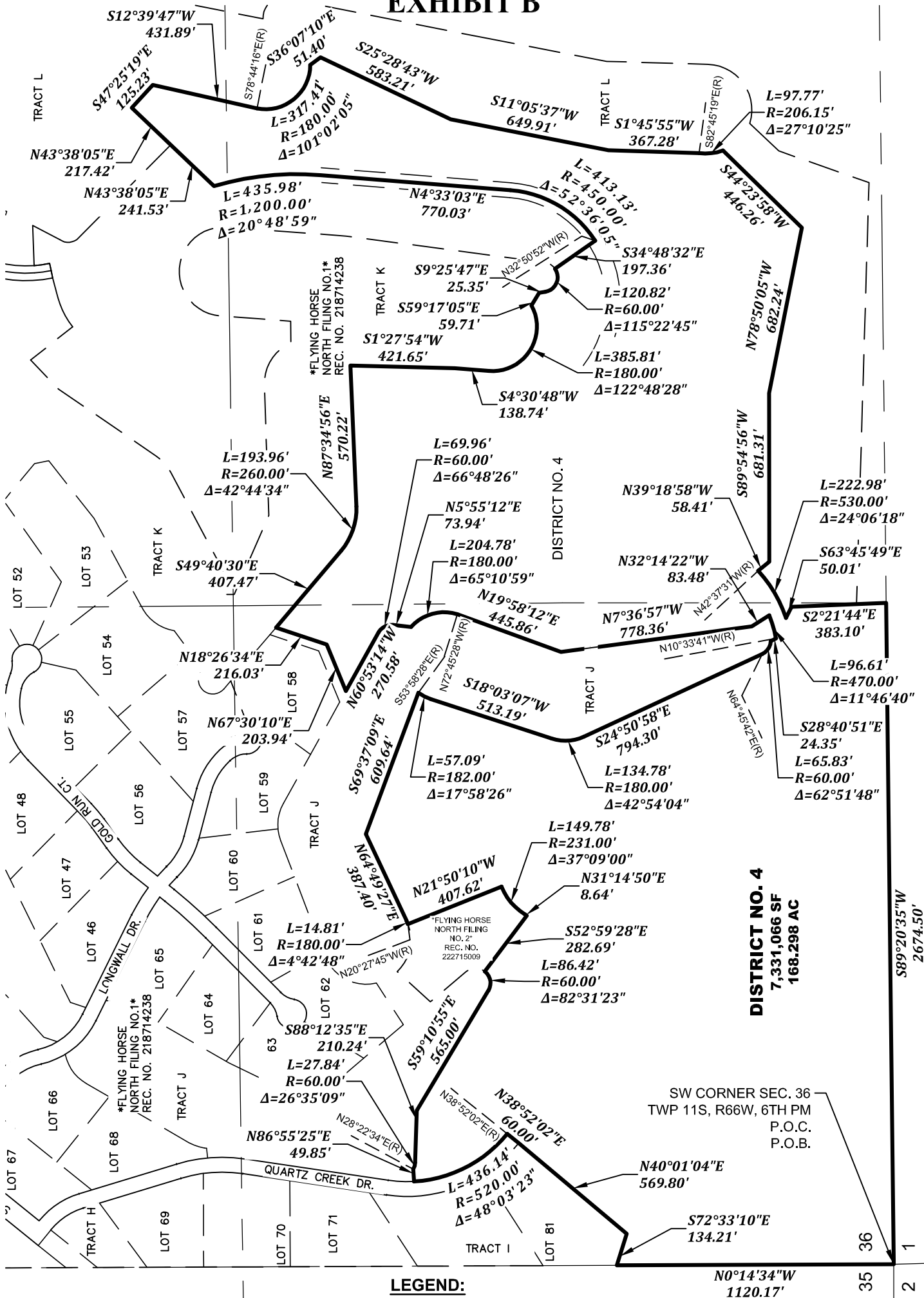
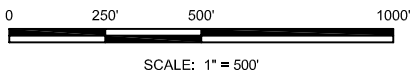


EXHIBIT B



LEGEND:

- P.O.C. POINT OF COMMENCING
- P.O.B. POINT OF BEGINNING
- (R) RADIAL BEARING
- * AREA NOT INCLUDED



THIS DRAWING DOES NOT REPRESENT A MONUMENTED LAND SURVEY AND IS ONLY INTENDED TO DEPICT THE LEGAL DESCRIPTION.



EDWARD-JAMES SURVEYING, INC.
 926 Elkton Dr. 4732 Eagleridge Circle
 Colorado Springs, CO 80907 Pueblo, CO 81008
 (719) 576-1216 (719) 545-6240
 04/13/23 JOB NO. 2417-00
 FHN METRO NO. 4 SHEET 3 OF 3

N0°14'34"W 1120.17'

35 2

DISTRICT NO. 4
 7,331,066 SF
 168,298 AC

SW CORNER SEC. 36
 TWP 11S, R66W, 6TH PM
 P.O.C.
 P.O.B.



EXHIBIT "A"

LEGAL DESCRIPTION: FLYING HORSE NORTH METROPOLITAN DISTRICT NO. 4

A TRACT OF LAND BEING A PORTION OF SECTION 36, TOWNSHIP 11 SOUTH, RANGE 66 WEST OF THE SIXTH PRINCIPAL MERIDIAN, BEING MORE PARTICULARLY DESCRIBED AS FOLLOWS:

BASIS OF BEARINGS:

THE NORTH LINE OF THE NORTHEAST QUARTER OF THE NORTHEAST QUARTER OF SECTION 36, TOWNSHIP 11 SOUTH, RANGE 66 WEST OF THE SIXTH PRINCIPAL MERIDIAN, BEING MONUMENTED AT THE WEST END BY A 1" YELLOW PLASTIC CAP STAMPED "18235" AND THE EAST END BY A 2" ALUMINUM CAP STAMPED "32439" WITH APPROPRIATE MARKINGS, IS ASSUMED TO BEAR N89°03'58"E A DISTANCE OF 1,332.09 FEET.

COMMENCING AT THE SOUTHWEST CORNER OF SECTION 36, TOWNSHIP 11 SOUTH, RANGE 66 WEST OF THE SIXTH PRINCIPAL MERIDIAN, SAID POINT BEING THE POINT OF BEGINNING; THENCE N00°14'34"W, ON THE WEST LINE OF SAID SECTION 36, A DISTANCE OF 1,120.17 FEET TO THE SOUTHWESTERLY CORNER OF SAID FLYING HORSE NORTH FILING NO. 1 AS RECORDED UNDER RECEPTION NO. 218714238;

THENCE ON THE SOUTHERLY BOUNDARY OF SAID FLYING HORSE NORTH FILING NO. 1 THE FOLLOWING NINE (9) COURSES:

1. S72°33'10"E A DISTANCE OF 134.21 FEET;
2. N40°01'04"E A DISTANCE OF 569.80 FEET;
3. N38°52'02"E A DISTANCE OF 60.00 FEET TO A POINT ON CURVE;
4. ON THE ARC OF A CURVE TO THE RIGHT WHOSE CENTER BEARS N38°52'02"E, HAVING A DELTA OF 48°03'23", A RADIUS OF 520.00 FEET, A DISTANCE OF 436.14 FEET TO A POINT ON CURVE;
5. N86°55'25"E A DISTANCE OF 49.85 FEET TO A POINT ON CURVE;
6. ON THE ARC OF A CURVE TO THE LEFT WHOSE CENTER BEARS N28°22'34"E, HAVING A DELTA OF 26°35'09", A RADIUS OF 60.00 FEET, A DISTANCE OF 27.84 FEET TO A POINT OF TANGENT;
7. S88°12'35"E A DISTANCE OF 210.24 FEET;
8. S59°10'55"E A DISTANCE OF 565.00 FEET TO A POINT OF CURVE;
9. ON THE ARC OF A CURVE TO THE LEFT HAVING A DELTA OF 82°31'23", A RADIUS OF 60.00 FEET, A DISTANCE OF 86.42 FEET TO A POINT ON CURVE, SAID POINT BEING ON THE WESTERLY BOUNDARY OF FLYING HORSE NORTH FILING NO. 2 RECORDED UNDER RECEPTION NO. 222715009;

THENCE ON THE BOUNDARY OF SAID FLYING HORSE NORTH FILING NO. 2 THE FOLLOWING FOUR (4) COURSES:

1. S52°59'28"E A DISTANCE OF 282.69 FEET;
2. N31°14'50"E A DISTANCE OF 8.64 FEET TO A POINT OF CURVE;
3. ON THE ARC OF A CURVE TO THE RIGHT HAVING A DELTA OF 37°09'00", A RADIUS OF 231.00 FEET, A DISTANCE OF 149.78 FEET TO A POINT ON CURVE;
4. THENCE N21°50'10"W A DISTANCE OF 407.62 FEET TO A POINT ON THE SOUTHERLY BOUNDARY OF SAID FLYING HORSE NORTH FILING NO. 1;

THENCE ON THE SOUTHERLY BOUNDARY OF SAID FLYING HORSE NORTH FILING NO. 1 THE FOLLOWING TWENTY-EIGHT (28) COURSES:

1. THENCE CONTINUING ON THE ARC OF A CURVE TO THE LEFT WHOSE CENTER BEARS N20°27'45"W, HAVING A DELTA OF 04°42'48", A RADIUS OF 180.00 FEET, A DISTANCE OF 14.81 FEET TO A POINT OF TANGENT;
2. N64°49'27"E A DISTANCE OF 387.40 FEET;
3. S69°37'09"E A DISTANCE OF 609.64 FEET TO A POINT ON CURVE;
4. ON THE ARC OF A CURVE TO THE LEFT WHOSE CENTER BEARS S53°58'28"E, HAVING A DELTA OF 17°58'26", A RADIUS OF 182.00 FEET, A DISTANCE OF 57.09 FEET TO A POINT OF TANGENT;
5. S18°03'07"W A DISTANCE OF 513.19 FEET TO A POINT OF CURVE;
6. ON THE ARC OF A CURVE TO THE LEFT HAVING A DELTA OF 42°54'04", A RADIUS OF 180.00 FEET, A DISTANCE OF 134.78 FEET TO A POINT OF TANGENT;
7. S24°50'58"E A DISTANCE OF 794.30 FEET TO A POINT ON CURVE;
8. ON THE ARC OF A CURVE TO THE LEFT WHOSE CENTER BEARS N64°45'42"E, HAVING A DELTA OF 62°51'48", A RADIUS OF 60.00 FEET, A DISTANCE OF 65.83 FEET TO A POINT ON CURVE;



9. S28°40'51"E A DISTANCE OF 24.35 FEET TO A POINT ON CURVE;
10. ON THE ARC OF A CURVE TO THE LEFT WHOSE CENTER BEARS N10°33'41"W, HAVING A DELTA OF 11°46'40", A RADIUS OF 470.0 FEET, A DISTANCE OF 96.61 FEET TO A POINT ON CURVE;
11. N32°14'22"W A DISTANCE OF 83.48 FEET;
12. N07°36'57"W A DISTANCE OF 778.36 FEET;
13. N19°58'12"E A DISTANCE OF 445.86 FEET TO A POINT ON CURVE;
14. ON THE ARC OF A CURVE TO THE LEFT WHOSE CENTER BEARS N72°45'28"W, HAVING A DELTA OF 65°10'59", A RADIUS OF 180.00 FEET, A DISTANCE OF 204.78 FEET TO A POINT ON CURVE;
15. N05°55'12"E A DISTANCE OF 73.94 FEET TO A POINT OF CURVE;
16. ON THE ARC OF A CURVE TO THE LEFT HAVING A DELTA OF 66°48'26", A RADIUS OF 60.00 FEET, A DISTANCE OF 69.96 FEET TO A POINT OF TANGENT;
17. N60°53'14"W A DISTANCE OF 270.58 FEET;
18. N67°30'10"E A DISTANCE OF 203.94 FEET;
19. N18°26'34"E DISTANCE OF 216.03 FEET;
20. S49°40'30"E A DISTANCE OF 407.47 FEET TO A POINT OF CURVE;
21. ON THE ARC OF A CURVE TO THE LEFT HAVING A DELTA OF 42°44'34", A RADIUS OF 260.00 FEET, A DISTANCE OF 193.96 FEET TO A POINT OF TANGENT;
22. N87°34'56"E A DISTANCE OF 570.22 FEET;
23. S01°27'54"W A DISTANCE OF 421.65 FEET;
24. S04°30'48"W A DISTANCE OF 138.74 FEET TO A POINT OF CURVE;
25. ON THE ARC OF A CURVE TO THE LEFT HAVING A DELTA OF 122°48'28", A RADIUS OF 180.00 FEET, A DISTANCE OF 385.81 FEET TO A POINT ON CURVE;
26. S59°17'05"E A DISTANCE OF 59.71 FEET;
27. S09°25'47"E A DISTANCE OF 25.35 FEET TO A POINT OF CURVE;
28. ON THE ARC OF A CURVE TO THE LEFT HAVING A DELTA OF 115°22'45", A RADIUS OF 60.00 FEET, A DISTANCE OF 120.82 FEET TO A POINT ON CURVE;

THENCE S34°48'32"E A DISTANCE OF 197.36 FEET TO A POINT ON CURVE; THENCE ON THE ARC OF A CURVE TO THE LEFT WHOSE CENTER BEARS N32°50'52"W, HAVING A DELTA OF 52°36'05", A RADIUS OF 450.00 FEET, A DISTANCE OF 413.13 FEET TO A POINT OF TANGENT; THENCE N04°33'03"E A DISTANCE OF 770.03 FEET TO A POINT OF CURVE; THENCE ON THE ARC OF A CURVE TO THE LEFT HAVING A DELTA OF 20°48'59", A RADIUS OF 1,200.00 FEET, A DISTANCE OF 435.98 FEET TO A POINT ON CURVE; THENCE N43°38'05"E A DISTANCE OF 241.53 FEET TO A POINT ON THE BOUNDARY OF SAID FLYING HORSE NORTH FILING NO. 1; THENCE ON THE BOUNDARY OF SAID FLYING HORSE NORTH FILING NO. 1 THE FOLLOWING SIXTEEN (16) COURSES:

1. CONTINUING N43°38'05"E A DISTANCE OF 217.42 FEET;
2. S47°25'19"E A DISTANCE OF 125.23 FEET;
3. S12°39'47"W A DISTANCE OF 431.89 FEET TO A POINT ON CURVE;
4. ON THE ARC OF A CURVE TO THE LEFT WHOSE CENTER BEARS S78°44'16"E, HAVING DELTA OF 101°02'05", A RADIUS OF 180.00 FEET, A DISTANCE OF 317.41 FEET TO A POINT ON CURVE;
5. S36°07'10"E A DISTANCE OF 51.40 FEET;
6. S25°28'43"W A DISTANCE OF 583.21 FEET;
7. S11°05'37"W A DISTANCE OF 649.91 FEET;
8. S01°45'55"W A DISTANCE OF 367.28 FEET TO A POINT ON CURVE;
9. ON THE ARC OF A CURVE TO THE LEFT WHOSE CENTER BEARS S82°45'19"E, HAVING A DELTA OF 27°10'25", A RADIUS OF 206.15 FEET, A DISTANCE OF 97.77 FEET TO A POINT ON CURVE;
10. S44°23'58"W A DISTANCE OF 446.26 FEET;
11. N78°50'05"W A DISTANCE OF 682.24 FEET;
12. S89°54'56"W A DISTANCE OF 681.31 FEET;
13. N39°18'58"W A DISTANCE OF 58.41 FEET TO A POINT ON CURVE;
14. ON THE ARC OF A CURVE TO THE RIGHT WHOSE CENTER BEARS N42°37'31"W, HAVING A DELTA OF 24°06'18", A RADIUS OF 530.00 FEET, A DISTANCE OF 222.98 FEET TO A POINT ON CURVE;
15. S63°45'49"E A DISTANCE OF 50.01 FEET;
16. S02°21'44"E A DISTANCE OF 383.10 FEET TO THE SOUTH QUARTER CORNER OF SAID SECTION 36;

THENCE S89°20'35"W ON THE SOUTH LINE OF THE SOUTHWEST QUARTER OF SAID SECTION 36, A DISTANCE OF 2,674.50 FEET TO THE POINT OF BEGINNING.

CONTAINING A CALCULATED AREA OF 7,331,066 SQUARE FEET, OR 168.298 ACRES, MORE OR LESS.